

# acoupanel® acoustic pinboard



Pin board

Weekly PLANNER

Velcro  
Adhesive Strips

Pin board

RUN A  
MOBILITY  
TEST



acoupanel® Pinboard

[www.feltech.co.th](http://www.feltech.co.th)

# acoupanel®

acoustic pinboard



**acoupanel®** I Pinboard is a dual layer with a soft decorative acoustic surface that can transform noisy interior and create a positive influence on the productivity and well-being in the office.

The functional design and color create a pleasant workplace in addition to the acoustic functionality,

**acoupanel®** I Pinboard is made of acoustic layers made of millions of recycled PET fibers regenerated from discarded PET bottles. It is non-allergenic and environmental friendly.

Product Name	acoupanel® Pinboard
Product Category	Pinnable acoustic panel
Material	100% Polyester fibers with >60% recycled content
Weight	3,000 gram / sq.m
Density	200 kgs / Cubic.m
Thickness	15 mm +/-10%
Size	1,220mm x 2,440 mm 1,220mm x 2,800 mm

### Performance

Fire rating	AS/ISO 9705, Group 1 Classification						
TVOC emission	CDPH-IAQ V1.1 2017, ≤ 0.5mg/m <sup>3</sup>						
Sound Transmission Class	STC 5, ISO 717 Part 1						
Sound Absorption	NRC 0.55 with no air gap, ISO 354 Sound Absorption Coefficients(as)						
	(Hz)	125	250	500	1000	2000	4000
Frequency f		0.01	0.11	0.37	0.78	1.00	0.98
		NRC 0.70 with 20mm air gap					
		NRC 0.75 with 50mm air gap					



Meet(s) **SCS Indoor Advantage™ Gold** certification for Indoor Air Quality



100% recyclable at the end of its useful life.



Acoustic performance



Minimum 60% post-consumer recycled material



No Red list chemicals, Formaldehyde & phenol free

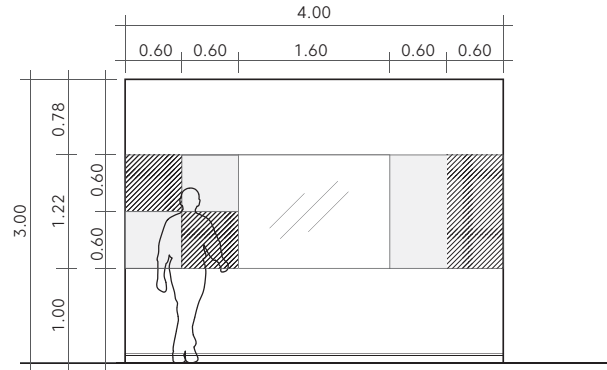


Velcro compatible

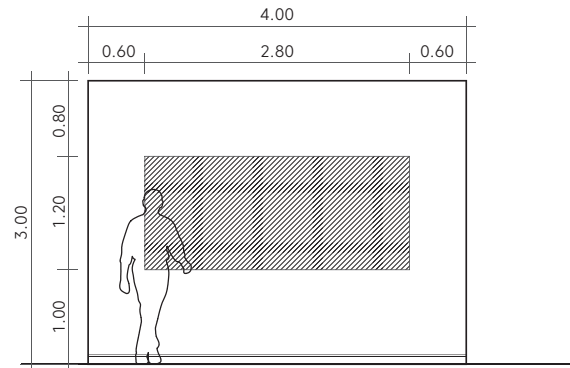
### Installation

**acoupanel®** I Pinboard can be installed in a variety of simple ways.

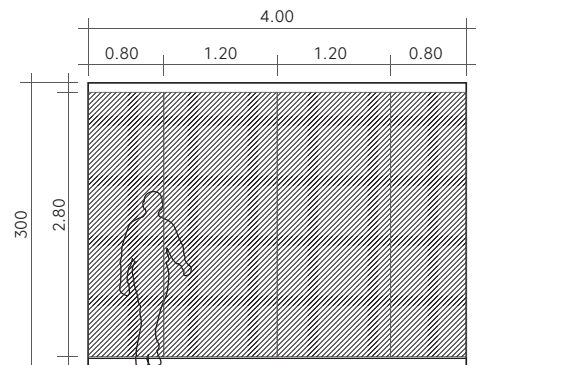
- Bond directly to the wall/ceiling using double sided adhesive tape , Liquidnails, etc
- Insert into a frame and hang
- Glue to undersides of furniture for sightless sound absorption



Easily reconfigured to suit your needs fully modular in design, you can combine panel with large or small panel or glass board as required.



Can be installed on any wall area. Using L-shape aluminum profile for corners and edges finishes



It is recommended to install above-floor level 3.94" (10 cm) for maintenance. Using L-shape aluminum profile for corners and edges finishes

### Care & Maintenance



Periodic dusting and vacuuming helps to maintain panel appearance. Dust with a soft cloth. When vacuuming, use low suction function and a soft brush attachment



Feltech Manufacturing Co.,Ltd

Amata City Chonburi Industrial Estate,  
700/377, Moo 6, Donhuaroh, Muang Chonburi, Chonburi, 20000, Thailand.

+66 240 3041-2

info@feltech.co.th  
www.feltech.co.th



Butter



Wasabi



Ivory



Peach



Oregano



Slate Grey



Carrot



Periwinkle



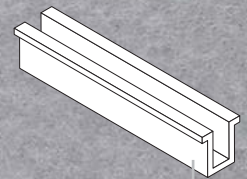
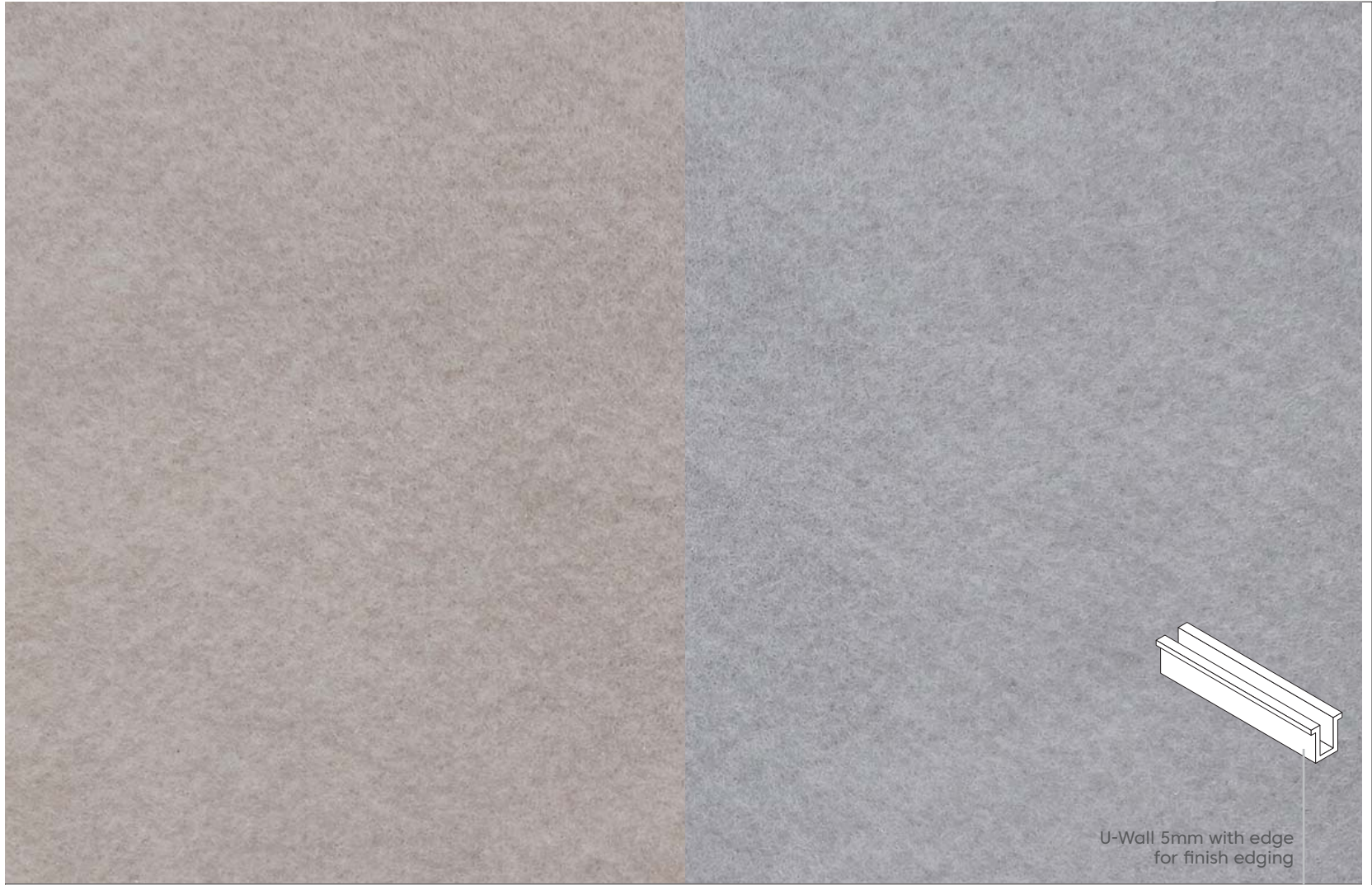
Charcoal



Berry



Azure



U-Wall 5mm with edge  
for finish edging



L-channel edge protecting profile  
for finish edging